

## 檔案申請應用 Access Services

「檔案」區分為「國家檔案」及「機關檔案」。依檔案法第2條規定，「國家檔案」係指具永久保存價值，而移歸本局管理之檔案，至於「機關檔案」則指由各機關自行管理之檔案。

如欲應用機關檔案，您可至「機關檔案目錄查詢網」(網址：<https://near.archives.gov.tw>)查詢所需檔案後，填具申請書向受理申請機關提出申請。如欲申請國家檔案，請從「國家檔案資訊網」(網址：<https://aa.archives.gov.tw>)檢索，再依據申請程序，以郵寄、傳真、親至本局或透過網路等方式提出申請。

Public records in Taiwan are classified as either "national archives" or "government agency records". According to Article 2 of the "Archives Act", the term "national archives" shall refer to records with permanent preservation value that have been transferred to the National Archives Administration, while the term "government agency records" shall refer to those documents and materials managed by individual government agencies.

Government agency records can be found in an online catalog (<https://near.archives.gov.tw>). After retrieving what you need, you can submit an application form to access to the records. For national archives, please go to the "Archives Access service" page at <https://aa.archives.gov.tw> and make a request online, or via mail or fax, or visit the National Archives Administration in person.



104年 10/16 (五) ~ 105年 5/13 (五) 北 Exhibition in New Taipei

星期一至星期五，上午9時至下午5時  
(配合展場休館規定，逢假日停展)  
Monday-Friday 9 a.m. to 5 p.m.  
(In accordance with exhibition site rules, the exhibition will be closed on holidays and weekends.)

國家發展委員會檔案管理局展覽廳  
(新北市新莊區中平路439號北棟1樓)  
The Exhibition Hall of the National Archives Administration,  
National Development Council  
(1F, North Tower, No. 439, Zhongping Rd., Xinzhuang Dist., New Taipei City)



免費參觀

105年 7/6 (三) ~ 105年 12/30 (五) 中 Exhibition in Nantou

每日上午9時至下午5時  
(逢週一及民俗節日休館)  
9 a.m. to 5 p.m.  
(closed on Mondays and national holidays)

國史館臺灣文獻館福爾摩沙特展室  
(南投市中興新村光明一路254號文物大樓1樓)  
Taiwan Historica's Formosa Special Exhibition Hall  
(1F, Folklore Artifacts Hall, No. 254, Guangming 1st Rd., Jhongsing Village, Nantou City)

國家發展委員會檔案管理局地址：新北市新莊區中平路439號北棟9樓

國家發展委員會檔案管理局網址：<http://www.archives.gov.tw/>

服務專線：(02) 8995-3700

National Archives Administration address:

9F, North Tower, No. 439, Zhongping Rd., Xinzhuang Dist., New Taipei City

National Archives Administration website:

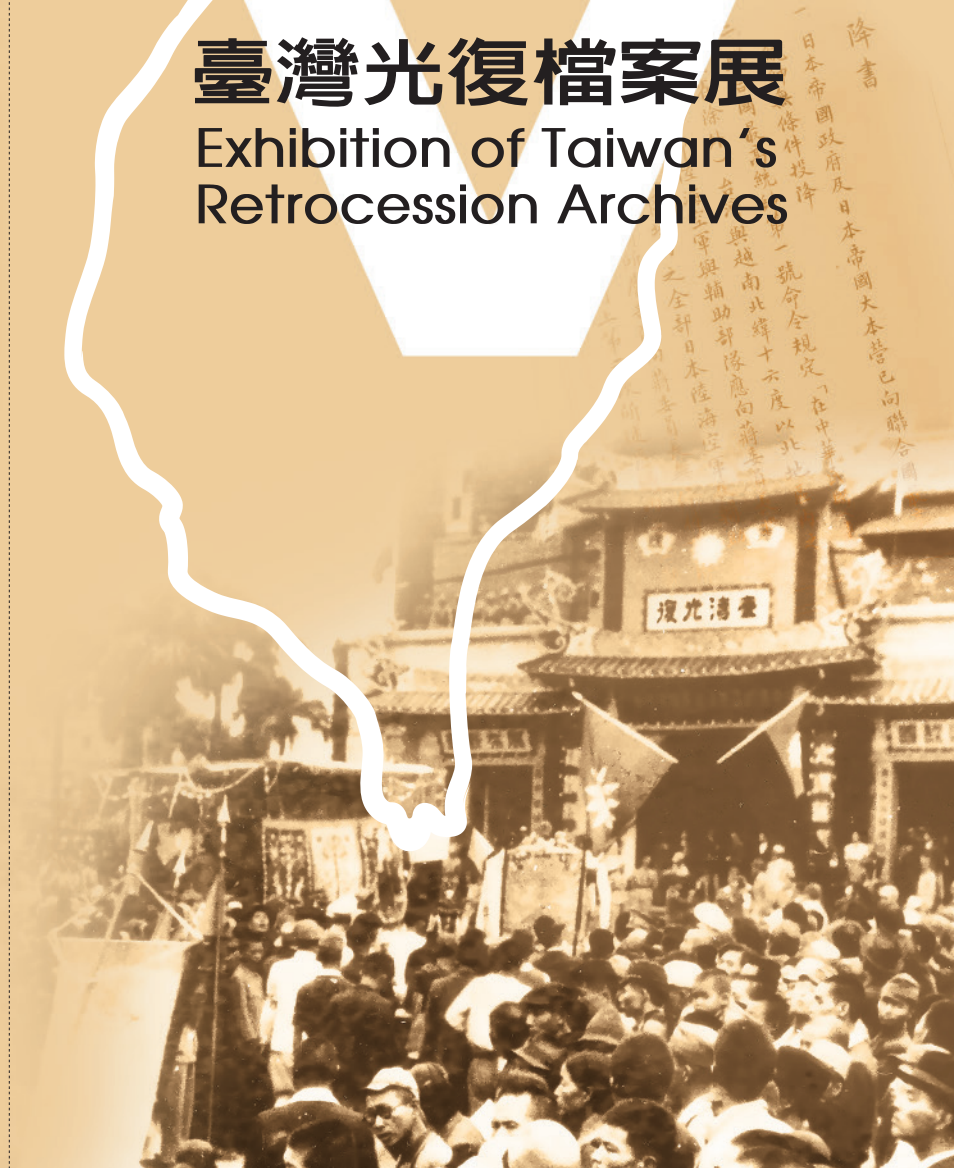
<http://www.archives.gov.tw/>

Telephone: (02) 8995-3700



# 1025

## 臺灣光復檔案展 Exhibition of Taiwan's Retrocession Archives



## 緣起 Origins

民國 104 年適逢臺灣光復 70 週年，回顧從臺灣被割讓予日本，歷經抗戰、勝利到光復，政府與民衆共同抵禦外侮、犧牲奮鬥的頁頁血淚史，令人動容；臺灣光復後，政府的接收過程及各項行政措施，為日後政治、經濟、教育、衛生、交通等建設與發展奠定重要的基礎。國家檔案中詳實記載了相關歷程，為加深國人對臺灣光復歷史的認識，爰將其系統化整理、加值並公開展示。

本次展覽為能呈現這段歷史的全貌，除展示國家發展委員會檔案管理局（以下簡稱本局）典藏的國家檔案外，亦蒐羅其他機關及民間典藏的檔案、文物、圖像及影音資料，荷承國史館、國史館臺灣文獻館、中央研究院臺灣史研究所檔案館、外交部、國立故宮博物院、國立臺灣博物館、國立臺灣歷史博物館、國家教育研究院、國家圖書館、國立公共資訊圖書館、國立臺灣圖書館、臺北市政府文化局、財團法人國家電影中心、財團法人中央廣播電臺、中國國民黨中央委員會文化傳播委員會黨史館、財團法人蔣渭水文化基金會、財團法人大眾教育基金會及財團法人蘆洲李宅古蹟維護文教基金會等機關（構）協助，使展覽內容豐富且多元，得以引領大家重溫臺灣光復及接收後籌劃發展的足跡。

Taiwan marks the 70<sup>th</sup> anniversary of its retrocession this year. From its cession to Japan, through the eight-year war of resistance (1937-1945), to victory and retrocession, the government and people rallied to confront foreign aggression and in the process made many moving sacrifices. After retrocession, the government's process for carrying out the handover and its implementation of administrative measures became an important part of the foundation for subsequent development in the areas of politics, economics, education, health, and transportation. This period is presented using archives that are arranged in a manner that makes it easy to gain a deeper understanding of the history behind retrocession.

In order to fully show the history of retrocession, besides displaying items from the National Archives Administration collection, history records, artifacts, images, video, and audio recordings were collected from other government agencies and private organizations. Assistance was provided by other institutions, including the Academia Historica, the Taiwan Historica, the Archives of the Institute of Taiwan History (Academia Sinica), the Ministry of Foreign Affairs, the National Palace Museum, the National Taiwan Museum, the National Museum of Taiwan History, the National Academy for Educational Research, the National Central Library, the National Library of Public Information, the National Taiwan Library, the Department of Cultural Affairs (Taipei City Government), the Taiwan Film Institute, the Radio Taiwan International, the Party Archives Library of Culture & Communications Committee Central Committee of The Kuomintang, the Chiang Wei-shui's Cultural Foundation, the CGCH Foundation for Education, and the Luzhou Lee Residence Heritage Maintenance Foundation. By gathering such a wide range of support, the exhibition is able to present diverse and abundant materials that inspire people to revisit the retrocession and the planning and development that followed the handover.



## 展覽內容與特色 The Content and Features of the Exhibition

### (一) 展覽內容：

本次展出的檔案依時序從「抗日活動」、「籌劃接收」、「政權交替」及「省政新局」分為 4 大主題，並搭配影音、圖片、照片及文物等，製作多媒體影片、設置情境模擬暨互動體驗區，以實體、線上、互動等方式呈現臺灣光復的發展歷程。

### (二) 展覽特色：

#### \* 諮詢服務區：

設於展場入口處，提供一般性諮詢服務與導覽協助，並備有相關文宣資料，以供參考。進入展場後，您可從背板文字說明瞭解本次展覽的目的與展出內容大要。

#### \* 檔案及文物展覽區

呈現國家檔案典藏的特色，本次展覽 4 大主題，以檔案搭配相關重要文物展出，例如：波茨坦宣言英文版、甲午海戰陣亡將士名單、宣告日本投降之空飄傳單、臺灣光復初期使用的郵票及紀念郵票等文物；此外，並有明星檔案 QRcode 語音導覽，以及 Q 版人物的引導解說。

#### \* 情境模擬暨互動體驗區

展場設有多項情境模擬與互動設施，如動手操作的轉動時光機、考驗機智的積木拼圖及提供即時留念的電子明信片等，透過檔案與各類裝置的融合，讓您以穿越時空及童趣的方式進入檔案的世界！

#### \* 線上展覽體驗區

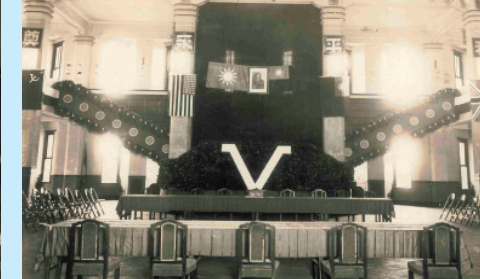
透過線上展覽系統除可瀏覽展出檔案、照片、文物及影片外，並設計 3 組闖關遊戲，您不僅可在展場操作使用，還特別設有行動版線上展覽，讓您在任何時間、地點及裝置，皆可上網瀏覽、闖關，並從遊戲中獲取與本展覽相關之知識，（網址：<http://atc.archives.gov.tw/retrocession/>）

#### \* 多媒體影片播放區

影片播放場景以模擬為戰時防空洞呈現，放映包括蔣渭水先生紀錄片、臺灣受降儀式與光復相關影片、以及美國國家檔案館典藏我國對日抗戰及受降相關影片等。

#### \* 打卡區

本次展覽特設有臉書打卡區，您可以透過展場的 iTaiwan(愛臺灣)輕鬆上網打卡，並邀請您的親朋好友前來觀展。為了感謝您的熱情參與，北部展出期間，月月抽出 4 位禮券得獎者(11/16、12/15、1/15、2/15、3/15、4/15)，展期最後一日(5/13)再抽出 2 名得獎者，致贈平板電腦 1 台。



影像來源：國史館

### 1. Exhibition Content:

The exhibition is arranged chronologically and divided into four parts: "Anti-Japanese Resistance Activities", "Planning and Preparation for Handover", "Transfer of Power", and "The New Provincial Government", where video and audio recordings, images, artifacts are displayed. In addition, zones for multimedia videos, simulations and interactive activities. Through the use of objects, online sources, and interactive displays, Taiwan's retrocession is put on full display.

### 2. Exhibition Special Features:

#### \* Information Desk:

Located at the entrance to the exhibit, the information desk answers questions and provides exhibition brochures and guided tours. After passing this point, you will gain an understanding of the purpose and content of the exhibition from the display panels.

#### \* Archives and Artifacts Area

In order to demonstrate the special characteristics of the National Archives Administration holdings, the four topical sections of the exhibition feature outstanding archives complemented by related artifacts, such as the English-language version of the Potsdam Declaration, a list of officers and soldiers who died in the First Sino-Japanese War, leaflets distributed to announce Japan's surrender, post-retrocession stamps, and commemorative stamps. Using QR codes, visitors can hear descriptions of key archives, and there are other fun guided explanations.

#### \* Simulations and Interactive Zone

The exhibition features simulations and interactive elements, including peep shows, a building block puzzle, and digital postcards that can be used to preserve memories. By inspecting archives and other displays, visitors can pass through time and experience archives in a fun and exciting way!

#### \* Online Exhibition

An online exhibition platform features archives, images, artifacts, videos, and games. Visitors can use the platform at the exhibition or try the special online mobile version. (<http://atc.archives.gov.tw/retrocession/>)

#### \* Multimedia Video Area

Videos are shown in a room built to resemble an air-raid shelter. Topics include a documentary of Chiang Wei-shui, the Japanese surrender and retrocession ceremony held in Taiwan, and videos from the U.S. National Archives and Records Administration that are related to the war of resistance and Japanese surrender.

#### \* Facebook Check-In Area

The exhibition has a special Facebook check-in area where visitors can connect to the iTaiwan WiFi network to check in on Facebook and invite friends and family to visit. To show our gratitude to those who participate, at the New Taipei exhibition there will be a monthly draw for some gift vouchers(11/16、12/15、1/15、2/15、3/15、4/15), and there will be two draws for tablet computers on the last day(5/13).